



PROTRAN
TECHNOLOGY

A Harsco Rail Company



CALLISTO: HY-RAIL

Inertial Track Geometry Integrated with Hy-Rail Vehicle

System Features:

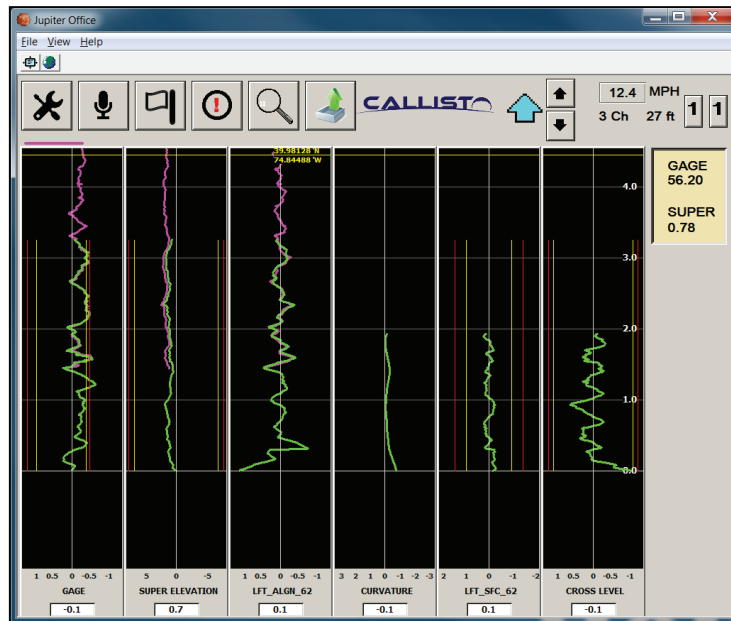
- High value, low cost, accurate measurement solution
- Exceptions processed in real-time based on FRA track class threshold limits
- High-speed recording (30 mph)
- Average precision of 1.5mm/0.1°
- Minimal retrofit requirements for existing vehicles



CALLISTO

CALLISTO: HY-RAIL

Inertial Track Geometry Integrated with Hy-Rail Vehicle



User Interface

FRA Compliant Exception Processing

Specifications:

Measured Track Geometry Data

Gauge
Alignment (Left/Right)
Curvature
Surface (Left/Right)
Crosslevel
Superelevation
Warp
Twist

Defect List Generated in Real-time

- Type of defect
- Start and end milepost location
- Milepost of defect's highest deviation
- Maximum defect value
- Safety or maintenance defect classification
- Defects generated according to track class selected
- Defect list can be based on customer-specific thresholds

Description:

The Callisto: Hy-Rail track geometry measurement system allows for simplified track geometry measurements to be made from most standard hy-rail vehicles. This small, compact system measures and exception process standard FRA required track geometry channels at both low and hy-rail speeds.

The Callisto: Hy-Rail system contains a number of measurement devices working in unison to produce concise track geometry and track geometry exception reports including, Inertial Measurement Unit (IMU), which measures the force and angular motions associated with geometry variations; laser/camera gauge reference system; and GPS.

PROTRAN
TECHNOLOGY

A Harsco Rail Company

1960 Old Cuthbert Road,
Cherry Hill, NJ 08034
www.protrantechology.com

856-779-7795