

PROTRAN
TECHNOLOGY

A Harsco Rail Company

CALLISTO

CALLISTO: PROTAMP

Tamper-Mounted Inertial Track Geometry System

Protran's Callisto Track Geometry System is an economical solution that provides reliable, precise, and accurate inertial track geometry data for use with tampers

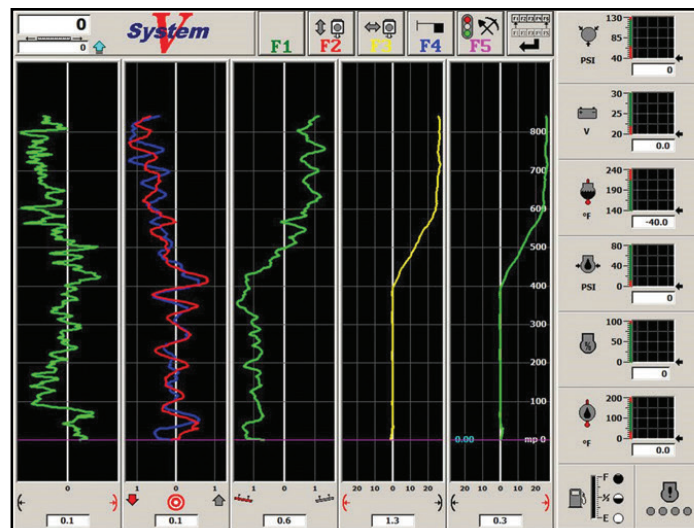
System Features:

- Fully integrated non-contact measurement
- Jupiter-driven
- Channels: gauge, curvature, superelevation crosslevel, twist, alignment and surface
- GPS location synchronization
- Automatically calculates geometry and throws



CALLISTO: PROTAMP

Tamper-Mounted Inertial Track Geometry System



User Interface



Description:

Protran's Callisto Track Geometry System is an economical solution that provides reliable, precise, and accurate inertial track geometry data for use with tampers.

Benefits

Allows for high speed recording by the tamper (25 mph)
Results in better quality tamping
Ability to collect and analyze geometry data during normal movements
SurfaceFit integration
Increased worker safety
Ability to increase productivity via an enterprise solution
Reduce track time requirements for same amount of work
ROI of less than 1 year for most railroads

PROTRAN
TECHNOLOGY

A Harsco Rail Company

1960 Old Cuthbert Road,
Cherry Hill, NJ 08034
www.protrantechnology.com

856-779-7795