

PROTRAN
TECHNOLOGY

A Harsco Rail Company

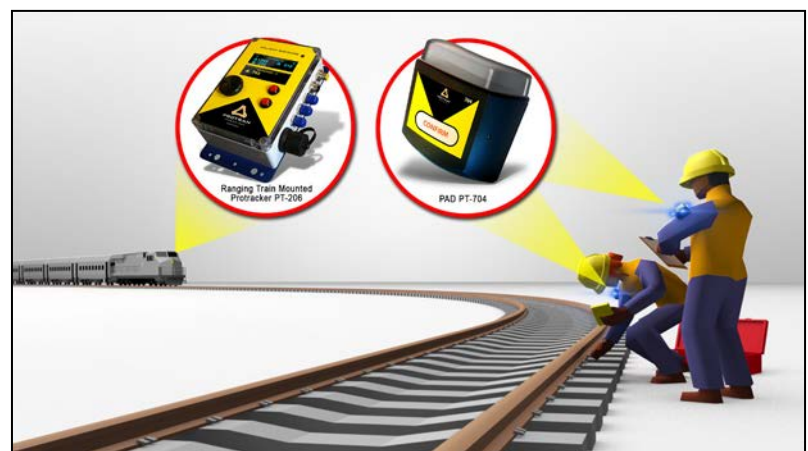


RANGING PROTRACKER

Roadway Worker Protection System – Advance Warning Devices

Features:

- Accurate advanced warnings provided to Track Workers and Train Operators
- Configurable Alert Settings: Time based (ex: 30 seconds) or Distance based (ex: 2,000 ft) advanced warning alert
- Discernible alerts to distinguish multiple trains approaching
- System provides Data Logging of all events
- Easy installation, User friendly operation, Minimal maintenance
- Meets NTSB –R-08-04



RANGING PROTRACKER

Track Walker/Worker – Train Operator – Advance Warning Devices

Parameter	Value
Power	18-75 VDC
Fuse Protected	1 amp
Transceiver frequency	Spread spectrum
Enclosure	Polycarbonate/IP65
Operating temperatures	-40C to +85C
Interfaces	RS232 and USB
Sound Output	75-95 dB @ 3ft.

Ranging Protracker PT-0206

22.4 x 11.9 x 7.4 cm.
(8.8 x 4.7 x 2.9 in.)
2.2 kg (4.9 lbs)



Wall Mounted Facility PAD/Flagger Tester PT-0207

22.4 x 11.9 x 7.4 cm.
(8.8 x 4.7 x 2.9 in.)
2.2 kg (4.9 lbs)



Wayside Mounted Protracker Verification Test Unit PT-0301

16.0 x 12.2 x 7.6 cm.
(6.3 x 4.8 x 3.0 in.)
2.2 kg (4.9 lbs)

Parameter	Value
Fuse Protected	1 Amp
Enclosure	Polycarbonate/IP65
Operating temperatures	-40C to +85C

Parameter	Value
DC Input	6VDC - 16VDC
Fuse protected	1 amp
Enclosure	Polycarbonate/IP65
Operating temperatures	-40C to +85C

Parameter	Value
Keypad	Durable sealed membrane
Enclosure	ABS Plastic/IP54
Power Requirements	Custom Charger: Standard 120 VAC
Operating Time	20+ hours with a full charge

Ranging PAD PT-0704

9.7 x 8.1 x 4.8 cm.
(3.8 x 3.2 x 1.9 in.)
0.5lbs (227g)



Protran Technology's innovative Ranging Roadway Worker Protection (RWP) system includes a vehicle-mounted device that transmits an alert to the Protran Personal Alert Device (PAD) worn by the roadway worker. This secondary RWP system provides a visual and audible advanced warning alert to the train operator of workers ahead and a visual and audible advanced warning to the track worker(s) of a train approaching the work zone. The system allows the worker to acknowledge the alert back to the train operator confirming they are in a place of safety. The Protran Ranging RWP system has data logging capabilities and the warning alerts are configurable based on time or distance. The system utilizes FCC certified radios and meets NTSB R-08-04.

FCC and IC approved. Other country approvals upon request.

PROTRAN
TECHNOLOGY

A Harsco Rail Company

1960 Old Cuthbert Road,
Cherry Hill, NJ 08034
www.protrantechology.com

856-779-7795